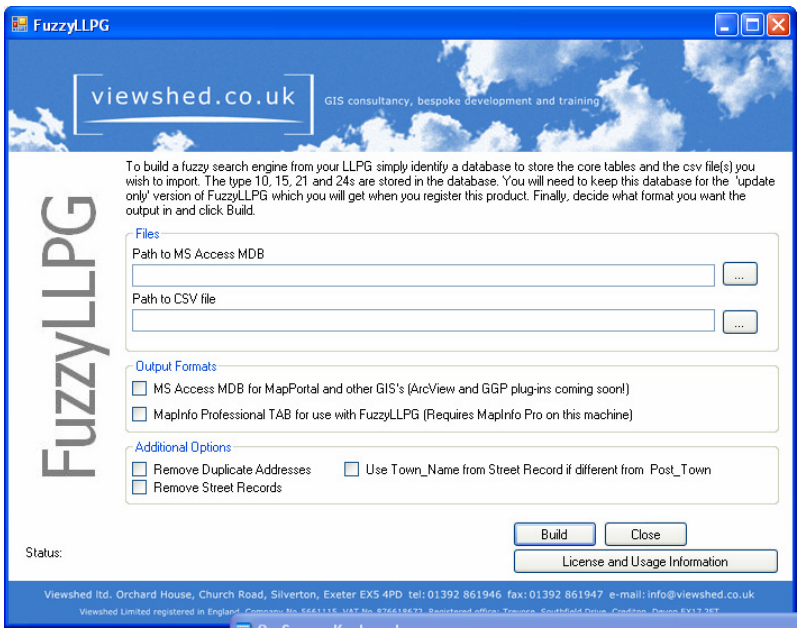
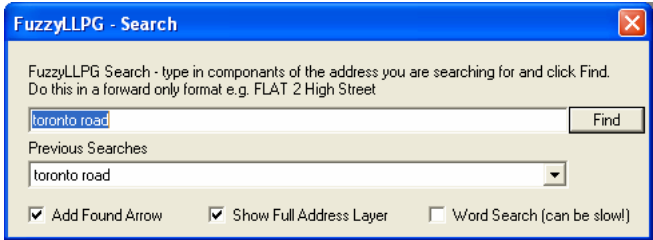


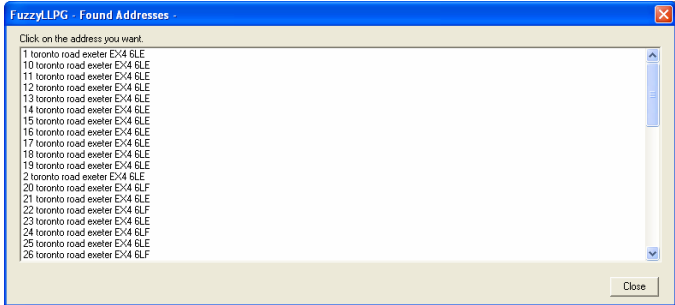
**FuzzyLLPG** – a fuzzy search engine built on the LLPG v7.3 CSV file format. Import one or many csv files and the admin tool builds a fuzzy search engine in both MapInfo tab and MS Access formats. A simple MBX provides the address search capabilities, greatly improving search efficiency. For more information and to download a copy simply see our website [www.viewshed.co.uk](http://www.viewshed.co.uk)



FuzzyLLPG Admin Tool. Here you specify how many CSV files you want to import and what format you want the output to be (TAB for searching in MapInfo Pro or MS Access for use with out web service).



Search Box. Stores the last search text and the previously successful searches from this session in a drop down list so repeat searches are more efficient.



Results Pane. Unique matches are shown on the map straight away. Multiple matches are displayed with their full address in the results pane. The user simply selects the address they want.

Map with chosen location indicated by the arrow.

